

TECHSTAR

DOCKFLOATS

INTRODUCING

COTTAGE DOCKS



**THE NEW
BF-12**

BUMPERFLOATS

**ALL PURPOSE
FLOATS**

COMMERCIAL DOCKS



SHOULDER FLOATS

SKID PLATE FLOATS

LADDERS

BUMPERBOYS

DOCK STEPS

HARDWARE

DOCKCARTS

HOW TO CHOOSE A TECHSTAR DOCKFLOAT

Even with a large selection, choosing the perfect Techstar dock float is easy!

Here's how:

1. **What are your length and width requirements?** Is this dock going to merely be access to your boat or will it be a floating deck capable of supporting 20 people with deck chairs and coolers? Keep in mind that the larger the floating dock, the more stable it will be.
2. **What are your height requirements?** Height out of the water (freeboard) is a key factor in your float selection. All of our floats will draw about 4 inches of water with a deck but no other load. Therefore the deck on a 16" high dock should have about 12" of freeboard before anyone steps on. This is a great height for most cottage docks offering maximum stability for your dollar. You may have noticed that older floating docks were built with used barrels and they were always tippy. **Shoulder Floats** and **All Purpose Floats** can be used with different frame lumber to vary the overall height. A 2x10 frame will make a dock 2" higher than a 2x8 framed dock.
3. **Do you have an application for built-in bumpers?** **Series 1 Bumperfloats** can be spread out to any width using AP-8 All Purpose Floats as centre floats. **Bumperfloats-12** can also be spread out to any width using AP12 all purpose floats as centre floats. **Series 2 Bumperfloats** can make a dock any length in multiples of 4 feet with bumpers on both sides. **Series 3 Bumperfloats** are a higher version of the BF-1 and BF-12 incorporating MF floats as centre floats.
4. **What can I afford?** **All Purpose Floats** are our most economical line, **Shoulder Floats** are the most expensive with **Bumperfloats** and **Skid Plate Floats** in the middle.
5. **Can I leave my new dock in all year round?** On many lakes this is possible however you do need to check with people on your lake for ice break up conditions in the spring. To leave a floating dock in, make sure it cannot touch anything other than water. Separate all floating sections and ramps by disconnecting hinge pins. Anchor the deep end and tie off the shallow end to shore leaving about 6 feet of slack. Techstar **Skid Plate Floats** have molded holes on the bottom to attach skid plates allowing you to drag your dock out with heavy equipment.

Techstar DockFloats offer these features:

- Molded of 100% virgin black LLDPE (linear low density polyethylene) by stress free rotational molding.
- UV8 ultraviolet light stabilizer compounded in.
- 10 year warranty.
- ISO 9001 Quality Assurance.
- Foam filled with EPS (Expanded Polystyrene) for added security.



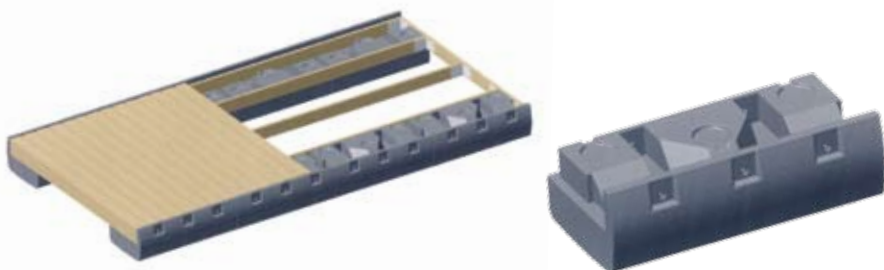
Dock Shapes



SERIES 1 - BUMPERFLOATS



Techstar Bumperfloats are a unique combination of dock bumper and flotation. Designed to run the length of your dock on both sides, these floats will comfortably float a dock 8 feet wide. For docks 10 to 12 feet wide we recommend a row of AP-8 All Purpose Floats up the middle and for docks 14 to 16 feet wide we recommend 2 rows of AP-8's.



BUMPERFLOAT FEATURES AND BENEFITS:

- Dock Bumpers are built in as part of the float.
- Foam filled with closed cell EPS (Expanded Polystyrene) for added security.
- **Your wood frame, hardware and decking stay out of the water.**
- Polyethylene is environmentally friendly, as well as gasoline and wildlife resistant.
- Construction is simple. Build a frame with corner brackets and attach floats through molded bolt holes (there are 5 holes per float).
- Your new dock will sit low to the water for maximum stability.
- Deck boards sit flush with top of the float for a clean finish.

REQUIREMENTS:

2 Floats are required for every 4 feet in dock length therefore a 16' x 8' dock similar to the one above would require 8 floats.

| Model | Dimensions | Flotation (pounds) | Average Wall Thickness | Shipping Weight (pounds) | Per Skid |
|-------|-------------|--------------------|------------------------|--------------------------|----------|
| BF-1 | 24"x48"x16" | 415 | .187 | 43 | 12 |

INTRODUCING THE ALL NEW BF-12 BUMPER FLOATS

NEW

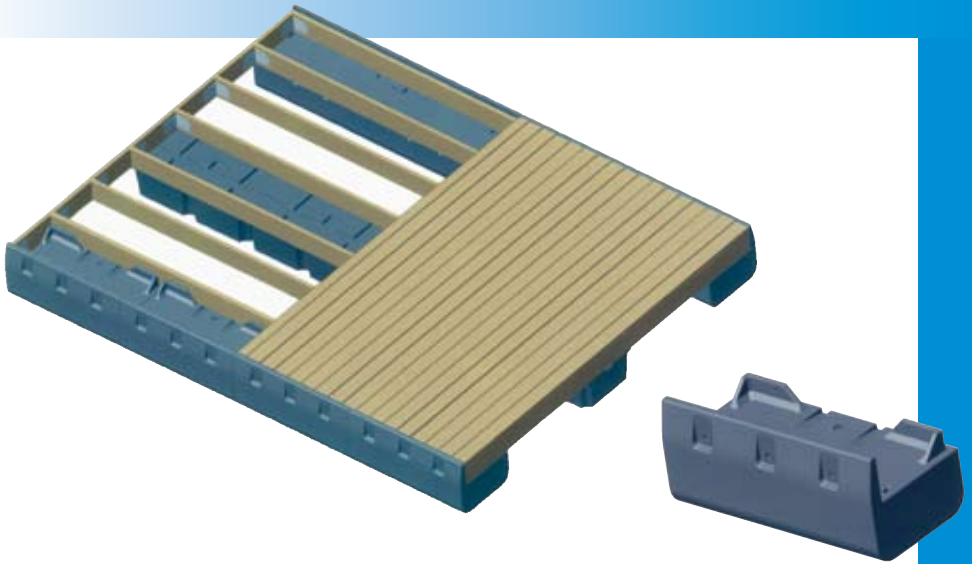


Get maximum freeboard with the all new BF-12 Bumper float!

Techstar Bumperfloats are a unique combination of dock bumper and flotation. Designed to run the length of your dock on both sides, these floats will comfortably float a dock 8 feet wide. For docks 10 to 12 feet wide we recommend a row of AP-12 All Purpose Floats up the middle and for docks 14 to 16 feet wide we recommend 2 rows of AP-12's.

BUMPER FEATURES AND BENEFITS:

- Dock Bumpers are built in as part of the float.
- Foam filled with closed cell EPS (Expanded Polystyrene) for added security.
- **Your wood frame, hardware and decking stay out of the water.**
- Polyethylene is environmentally friendly, as well as gasoline and wildlife resistant.
- Construction is simple. Build a frame with corner brackets and attach floats through molded bolt holes (there are 5 holes per float).
- Deck boards sit flush with top of the float for a clean finish.
- Utilizes 2" x 8" framing.
- Maximum freeboard with 12" of float under your frame.



REQUIREMENTS:

2 Floats are required for every 4 feet in dock length therefore a 16' x 12' dock similar to the one above would require 8 floats and 4 AP-12's.

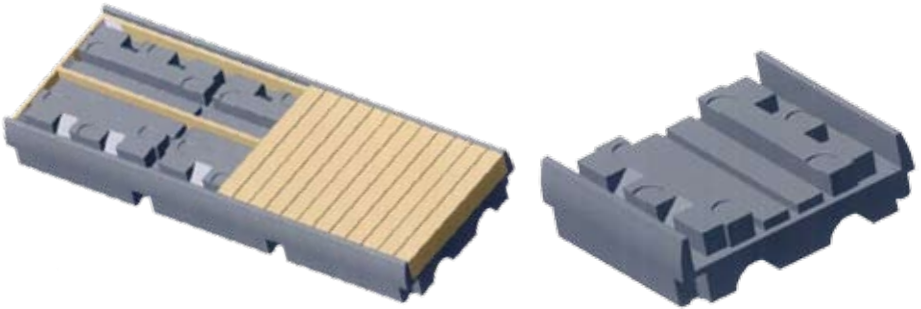
| Model | Outside Dimensions | Flotation (pounds) | Average Wall Thickness | Shipping Weight (pounds) | Per Skid |
|-------|--------------------|--------------------|------------------------|--------------------------|----------|
| BF-12 | 48"x24"x21" | 430 | .187 | 43 | 12 |



SERIES 2 - BUMPERFLOATS



Techstar Series 2 Bumperfloats make the narrowest Bumperfloat dock with the maximum stability. 4 Foot lengths allow you to build a 4 foot wide dock in lengths of 8 feet, 12 feet, 16 feet, etc.



SERIES 2 FEATURES AND BENEFITS:

- Molded holes in the bottom allow for easy attachment using lag screws to the 2 x 6 frame.
- Makes a great floating ramp or water access for a canoe.
- Foam filled for added security.
- Accepts 4 foot deck boards.

REQUIREMENTS:

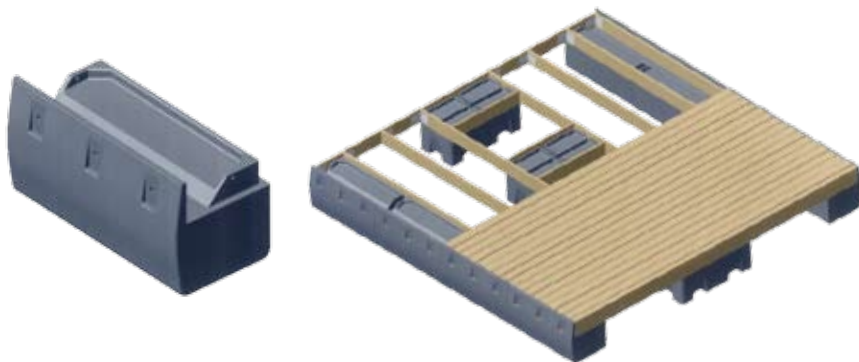
One float is required for every 4 feet of dock length.

| Model | Outside Dimensions | Flotation (pounds) | Average Wall Thickness | Shipping Weight (pounds) | Per Skid |
|-------|--------------------|--------------------|------------------------|--------------------------|----------|
| BF-2 | 54"x48"x16" | 990 | .225 | 80 | 6 |

SERIES 3 - BUMPERFLOATS



Techstar's Series 3 Bumperfloats are a higher version of our Patented Series 1 Bumperfloat. Designed to run the length of your dock on both sides, these floats will comfortably float a dock 8 feet wide. BF-3's are used for larger and higher docks.



SERIES 3 FEATURES AND BENEFITS:

- Dock Bumpers are built in as part of the float.
- Foam filled for added security.
- **Your wood frame and decking stay way out of the water.**
- Polyethylene is environmentally friendly, as well as gasoline and wildlife resistant.
- Construction is simple. Build a frame with 2x8 or 3x8 lumber and corner brackets, then attach floats through molded bolt holes (there are 8 holes per float).
 - Deck boards sit flush with top of the float for a clean finish.

REQUIREMENTS:

2 Floats are required for every 4 feet in dock length and docks over 8 feet wide should have center flotation. Techstar Model MF-2448 is the right height for center flotation therefore for a 16x16 dock similar to the one shown here would require 8 x BF-3's and at least 4 x MF-2448's.

| Model | Outside Dimensions | Flotation (pounds) | Average Wall Thickness | Shipping Weight (pounds) | Per Skid |
|-------|--------------------|--------------------|------------------------|--------------------------|----------|
| BF-3 | 24"x48"x25" | 700 | .250 | 65 | 8 |

TECHSTAR ALL PURPOSE DOCK FLOATS

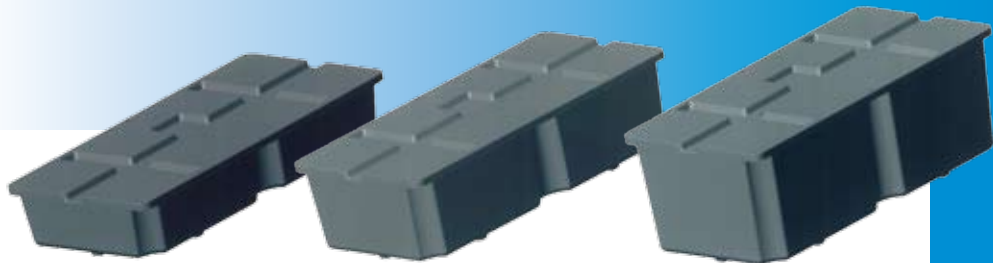
Techstar All Purpose Dock Floats offer the maximum in design flexibility and economy. Each float has 6 molded holes enabling you to lag your floats to your frame up from the bottom. You can use any size framing lumber 2x6 or larger. 3 different heights allow you to choose your freeboard.



WHY CHOOSE TECHSTAR ALL PURPOSE DOCK FLOATS?

1. Both lumber and hardware stay out of the water.
2. Less wood required for construction.
3. Less labor to build your dock.
4. Polyethylene is environmentally friendly.
5. Polyethylene is gasoline resistant.
6. Polyethylene is resistant to aquatic wildlife such as muskrats, otters and beavers.
7. 3 Heights to choose from (8", 12" & 16").
8. 6 mounting holes are molded in.

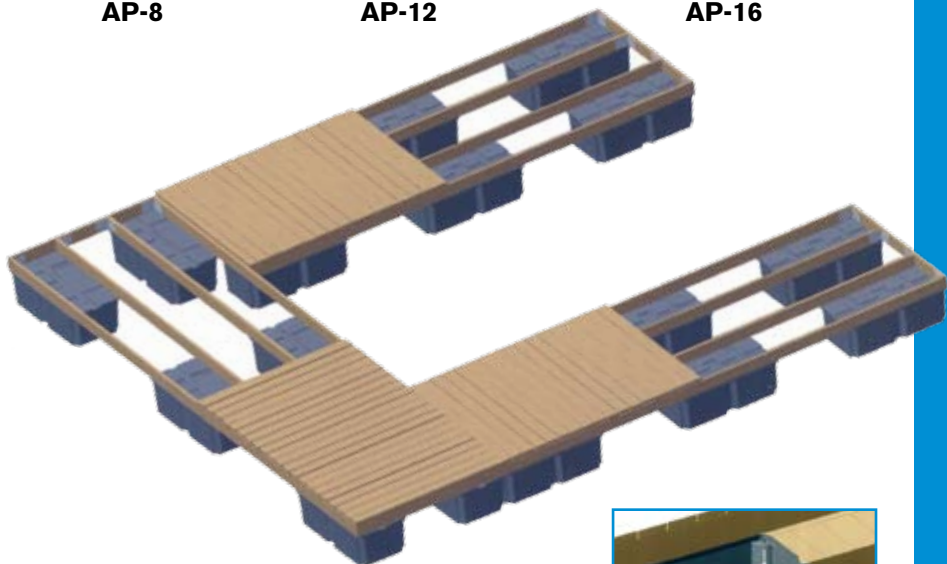




AP-8

AP-12

AP-16



REQUIREMENTS:

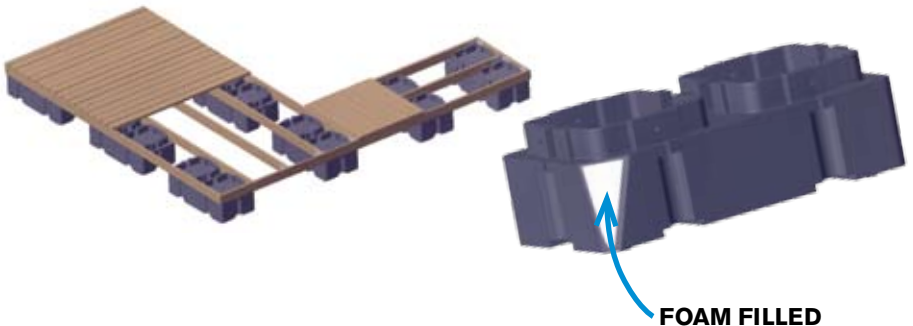
Choose your required freeboard then pick the correct float for height taking into consideration your frame height. Next, work out the square footage of your dock design and consult the chart below. Let's say you were going to build an 8'x20' standard rectangular dock and wanted to use AP-12 floats. Your dock would be 160 square feet so if you divide by 20 (the number off the chart), you would need a minimum of 8 floats. Put a float close to or right on each corner and spread the balance out relatively equally. An extra long or heavy ramp will require flotation where dock and ramp meet.

| Model | Outside Dimensions | Flotation (pounds) | Average Wall Thickness | Sq. Foot Deck Coverage | Shipping Weight (pounds) | Per Skid |
|-------|--------------------|--------------------|------------------------|------------------------|--------------------------|----------|
| AP-8 | 24"x48"x8" | 250 | .125 | 15 | 26 | 20 |
| AP-12 | 24"x48"x12" | 400 | .150 | 20 | 41 | 12 |
| AP-16 | 24"x48"x16" | 510 | .225 | 25 | 54 | 10 |

LOW PROFILE SHOULDER FLOATS



Techstar Low Profile Shoulder Floats are uniquely molded with a mounting shoulder and holes to bolt thru to your frame. They are ideal for all applications including commercial docks and large residential docks.



SHOULDER FLOAT FEATURES AND BENEFITS:

- Low Profile Shoulder Floats allow you to use any size framing lumber and bolt sideways thru a choice of 8 molded holes.
- Now foam filled for added security.
- 12" of flotation sits under your frame.
- A favourite float for many dock builders.

REQUIREMENTS:

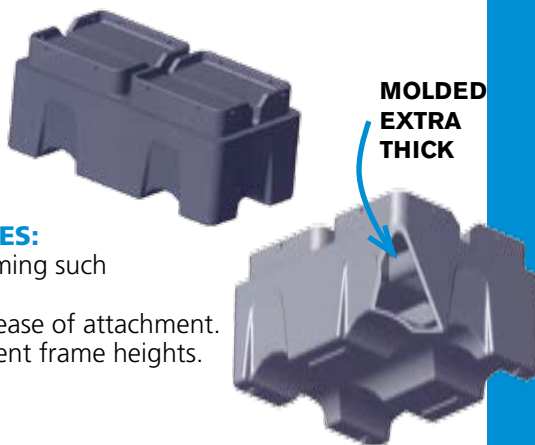
A minimum of one LP-2448 is required for every 20 square feet of deck surface of the dock your are building. If your dock is going to be 30'x12' or 360 square feet, you would need 18 floats minimum (360 divided by 20 = 18) to float your dock properly. 4 Floats should be set in the corners and the balance spread evenly throughout the surface area.

| Model | Outside Dimensions | Flotation (pounds) | Average Wall Thickness | Sq. Foot Deck Coverage | Shipping Weight (pounds) | Per Skid |
|---------|--------------------|--------------------|------------------------|------------------------|--------------------------|----------|
| LP-2448 | 24"x48"x16" | 425 | .250 | 20 | 48 | 10 |

HEAVY DUTY SHOULDER FLOATS



Techstar Heavy Duty Shoulder Floats are commonly used in large commercial docks. Perfect for marinas, two size floats accommodate finger docks 24", 30", 36" and 48" wide.



H.D. SHOULDER FLOAT FEATURES:

- You can comfortably use large framing such as 2x12 or 3x10.
- 12 Molded holes in each float for ease of attachment.
- Adjustable dock height with different frame heights.
- Our toughest floats - 3/8" thick.
- Molded cable trough.

REQUIREMENTS:

A minimum of one HD Shoulder Float is required for every 25 square feet of deck surface you are building. If you are building a dock 60'x10' or 600 square feet, you would need 24 floats minimum (600 divided by 25 = 24) to float your dock properly. If you are hinging 30"x20' finger docks to this main dock, each finger would be 2.5 x 20 = 50 square feet. You would need a minimum of 2 Model MF-3036 floats for each finger, one mounted about a foot from the deep end and one in the middle. The main dock should float the hinged end adequately.

| Model | Outside Dimensions | Flotation (pounds) | Average Wall Thickness | Sq. Foot Deck Coverage | Shipping Weight (pounds) | Per Skid |
|---------|--------------------|--------------------|------------------------|------------------------|--------------------------|----------|
| MF-3036 | 30"x36"x22" | 575 | .375 | 25 | 65 | 4 |
| MF-2448 | 24"x48"x22" | 630 | .375 | 25 | 70 | 8 |

SKID PLATE FLOATS

On some lakes you just cannot leave your dock in the water over the winter. If you have equipment to haul your dock out and a suitable shoreline for dragging a dock out, then Skid Plate Floats are for you.



SKID PLATE FLOAT FEATURES:

- Molded holes on the bottom of the floats accommodate attachment of skid plates to the bottom of your dock.
- Molded slots and holes around the floats give you maximum construction flexibility.
- 5 Sizes to choose from.
- Foam filled for added security.
- Skid Plate Floats are a favorite with dock builders that offer spring and fall services for launching and taking out docks annually.
- Skid Plate Floats make great finger docks too.

REQUIREMENTS:

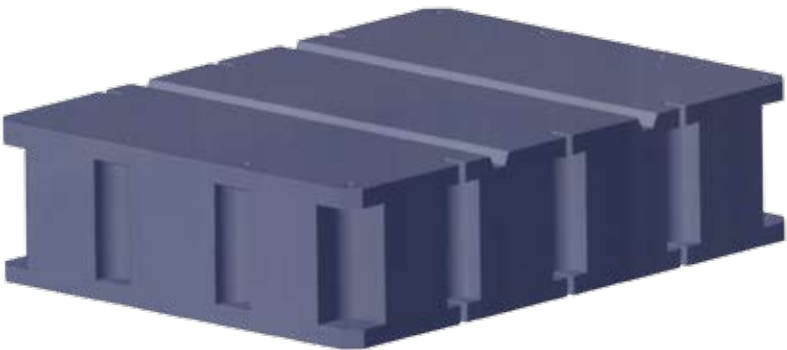
The chart below shows the square foot coverage for each Skid Plate Float. If you are building a dock 9'x20' (180 square feet) you could use 6 x SP-3648.

| Model | Dimensions | Flotation (pounds) | Average Wall Thickness | Sq. Ft. Deck Coverage | Shipping Weight (lbs) | Per Skid |
|---------|-------------|--------------------|------------------------|-----------------------|-----------------------|----------|
| SP-2448 | 24"x48"x12" | 400 | .187 | 20 | 35 | 12 |
| SP-3648 | 36"x48"x12" | 600 | .187 | 30 | 45 | 6 |
| SP-4848 | 48"x48"x12" | 800 | .187 | 40 | 55 | 6 |
| SP-3672 | 36"x72"x12" | 900 | .187 | 45 | 70 | 6 |
| SP-4872 | 48"x72"x12" | 1200 | .187 | 60 | 90 | 6 |

PHOTO SHOWS BOTTOM OF SKID PLATE FLOAT DOCK.



9'X20' DOCK USING SIX SP-3648.



MODEL SP-3648.

TECHSTAR'S DL-4 DOCK LADDER



Techstar's new flip up 4 step dock ladder is now standard in Sandstone. Whether you flip it up every weekend or just for the winter, this ladder fills with water when submerged, and drains when elevated.

TECHSTAR'S BUMPERBOY™ DOCK BUMPER

**NOW AVAILABLE
IN SANDSTONE**



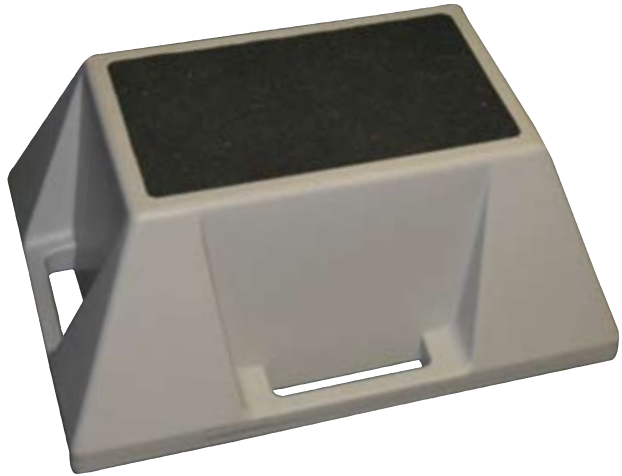
Protect your investment with Techstar Dock Bumpers. The BB-7 works with new docks or will easily retrofit most existing docks. Molded in lengths just under 4 feet, the 7 inch height will cover the end of your decking as well as a complete 2x6 frame. A full 3" of protection between your dock and boat gives you peace of mind.

| Model | Outside Dimensions | Average Wall Thickness | Shipping Weight (pounds) | Per Box |
|-------|--------------------|------------------------|--------------------------|---------|
| BB-7 | 47.5"x7"x3" | .155 | 3 | 12 |

STEP UP IN STYLE WITH OUR **NEW**-DOCK STEP



ANTI-SLIP FINISH



- Rotomolded from LLDPE for maximum durability.
- Will not absorb water.
- Special anti-slip finish on upper surface.
- Rubber feet are skid resistant for extra stability.
- Extra wide design for maximum stepping area.

SPECIFICATIONS:

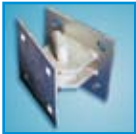
Dimensions:

| | | | |
|--------|-----|------------------|---------------|
| Length | 28" | Shipping Weight | 13 lbs. |
| Width | 20" | Standard Colours | Grey & Yellow |
| Height | 13" | Maximum Capacity | 500 lbs. |

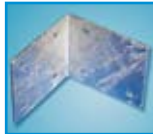
HARDWARE

Techstar stocks hinges and corner brackets for your dock project. Hot dipped galvanized and ready for construction.

HEAVY DUTY



H.D. Hinge
Model
#91-119



**H.D. 90°
Corner
Bracket**
Model
#92-104



**H.D.
Backing
Plate**
Model
#93-122

REGULAR DUTY



Hinge
Model
#86-103



**90° Corner
Bracket**
Model
#86-104



**Backing
Plate**
Model
#87-122

TECHSTAR'S DOCK CART MODEL I/O-20



FORGET TAKING A CARLOAD OF SUPPLIES TO YOUR BOAT BY HAND...



DOCK CART FEATURES AND BENEFITS:

- Wheels roll effortlessly through gravel, grass and other uneven surfaces.
- Rotomolded in linear LDPE for Techstar toughness.
- Molded body and undercarriage for maximum corrosion resistance.
- 20" Semi pneumatic wheels with ball bearings for moving your toughest load.
- No sharp edges or corners.
- Easy to clean.

SPECIFICATIONS:

- Level volume - 10 cubic feet
- Maximum load - 400 pounds
- Overall dim. - 63"L x 31.5"W x 27"H
- Zinc plated 3/4" axle
- Inside height - 16"
- Stock colour - sandstone
- Shipping weight - 65 pounds



WHEEL IT EASILY, RIGHT UP TO YOUR BOAT, UNLOAD AND ANCHOR'S AWAY!



15400 OLD SIMCOE ROAD, PORT PERRY, ONTARIO, CANADA L9L 1L8
ALBERTA: 1(800) 465-9968 • QUEBEC & MARITIMES: (418) 774-3547
PORT PERRY: (905) 985-8479 • TOLL FREE: 1-800-263-7943
FAX: (905) 985-0265 • E-MAIL: sales@techstarplastics.com
www.techstarplastics.com